

# PosiTile Carpet

One-to-One Carpet Tile for Tate Access Floors



**Tate**<sup>®</sup>

# PosiTile Carpet

## The Ideal Solution for Access Floors...

- Reduces Move Time
- No Additional Attic Stock
- Eliminates Waste Due to Churn

## Access Floors provide maximum office flexibility...

Access floors provide quick and easy access to your service distribution systems giving you maximum flexibility to change your workplace as your organization and technology changes.



Four patented, ultrasonically welded buttons on the underside of the tile provide precise indexed alignment with four matching holes in the ConCore® panel. Now anyone can re-arrange their work area quickly and easily.

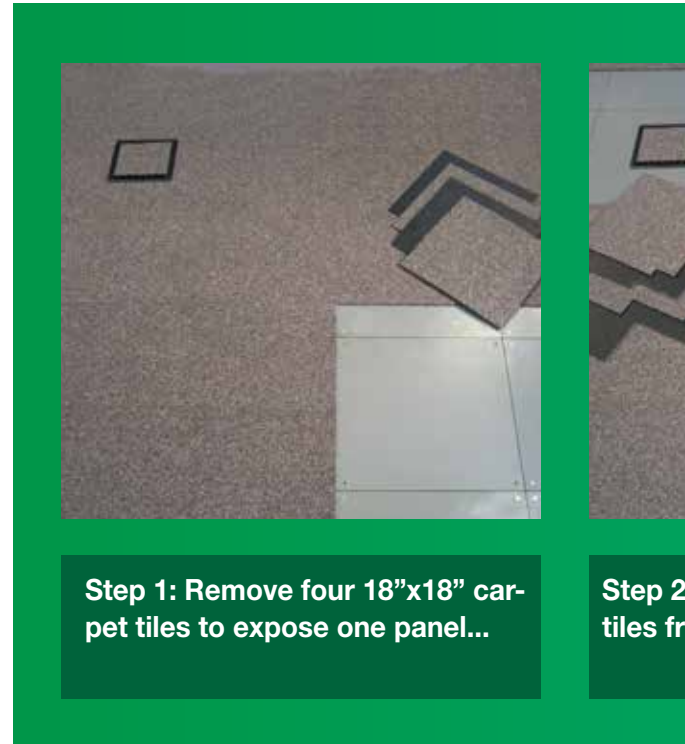
See for yourself the difference a simple move makes!

## Don't Limit the flexibility...

Preserve the flexibility of the access floor with PosiTile®. Unlike carpet tiles that don't have the same module size as access floors (such as 18", 24", and 36" sizes), each PosiTile® carpet has a one-to-one fit with the access floor panel allowing you to move utility services to any location quickly, easily, and without waste.

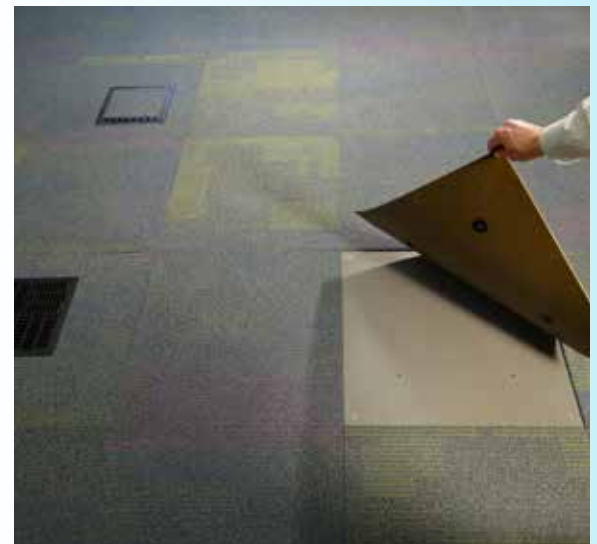
## The Solution...

Tate, the largest manufacturer of access flooring in the United States has partnered with the largest carpet manufacturers to provide PosiTile® – The ideal carpet tile solution for access floors. Each PosiTile® module is a carpet tile that is engineered to match one Tate ConCore® access floor panel.



**Step 1: Remove four 18"x18" carpet tiles to expose one panel...**

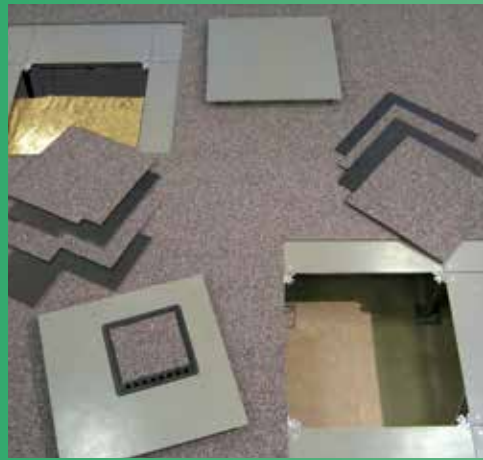
**Step 2: tiles fr**



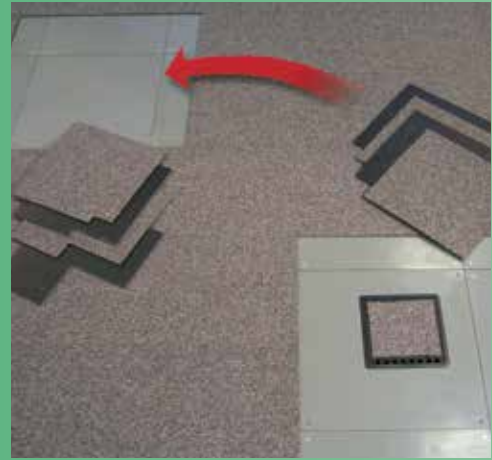
**Step 1: Remove one PosiTile® carpet to expose one panel...**



Step 1: Remove four cut carpet tiles from around service box...



Step 2: Move solid and service panels to desired location...



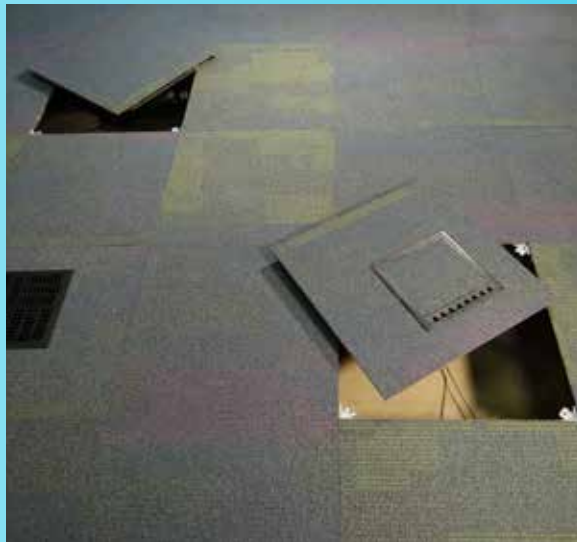
Step 3: Position access floor panels and move un-cut carpet tiles to solid panel location...



Step 4: Move new service panel...



Step 2: Remove access floor panels....



Step 3: Switch the service panel with the solid panel...



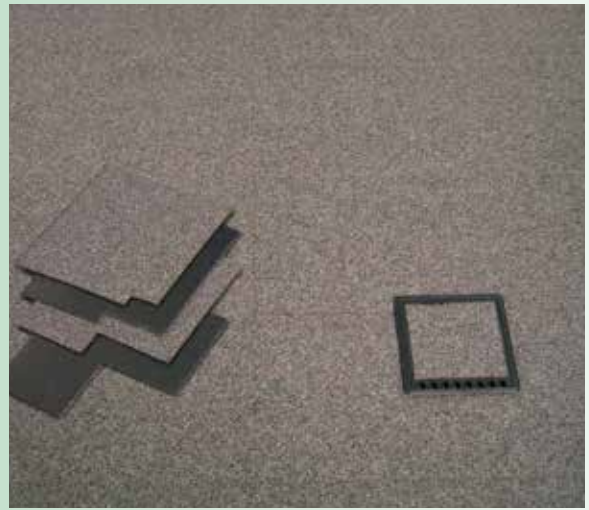
Step 4: Move new service panel...



Move cut carpet tiles to service box location...



Step 6: Cut carpet tiles do not fit at new location, need new carpet tiles...



Step 7: Install new carpet tiles from attic stock and re-cut to service box. Process generates four carpet tiles of waste and additional labor.

Since conventional carpet tiles do not have a one-to-one fit with the access floor panels, moving a service box to a new location requires much more time and generates waste.



Completed! Process is faster, and waste.

## PosiTile®. One-to-one Simplicity...

PosiTile, service box and access floor are moved as one unit. The panel and the one-to-one PosiTile can simply be swapped with another floor panel easily. No other tiles need be handled.

# Cost Comparison

Calculate the total cost of PosiTile® vs. conventional carpet tile and see how the savings add up!

<b>Carpet Cost Summary</b>	<b>PosiTile®</b>	<b>Conventional Carpet Tile</b>
Carpet Cost (\$/yd <sup>2</sup> )	\$28.75	\$25.00
Quantity of Carpet Required (yd <sup>2</sup> )	10,000	10,000
Base Carpet Cost (Workstation Area x Carpet Cost)	\$287,500	\$250,000
Additional Attic Stock Material (see Worksheet A)	\$0	\$50,000
Labor Cost due to Churn (see Worksheet B)	\$21,667	\$130,000
<b>Total cost over period</b>	<b>\$309,167</b>	<b>\$430,000</b>
<b>Additional Attic Stock - Worksheet A</b>		
<i>Total cost of attic stock required due to carpet waste generated by simple service box moves.</i>	<b>PosiTile®</b>	<b>Conventional Carpet Tile</b>
A. Number of workstations	500	500
B. Churn Rate (%)	40%	40%
C. Period (years)	10	10
D. Total number of churns over period (AxBxC)	2000	2000
E. Carpet waste per churn (yd <sup>2</sup> )	0	1
F. Total amount of carpet waste over period (DxE)	0	2000
G. Cost of Carpet (\$/yd <sup>2</sup> )	\$28.75	\$25.00
<b>H. Total cost of extra attic stock due to waste over period (FxG)</b>	<b>\$0.00</b>	<b>\$50,000</b>
<b>Churn Labor - Worksheet B</b>		
<i>Total cost of churn labor due to the time required to make simple service box moves.</i>	<b>PosiTile®</b>	<b>Conventional Carpet Tile</b>
A. Number of workstations	500	500
B. Churn Rate (%)	40%	40%
C. Period (years)	10	10
D. Total number of churns over period (AxBxC)	2000	2000
E. Average move time per churn (minutes)	10	60
F. Total move time (hrs) over period (DxE/60)	333	2000
G. Labor Rate (\$/hr)	\$65.00	\$65.00
<b>H. Total churn labor cost over period (FxG)</b>	<b>\$21,667</b>	<b>\$130,000</b>



**Corporate Headquarters:**

7510 Montevideo Road,  
Jessup, MD 20794  
Tate Hotline: 1-800-231-7788  
Tel: +1 410 799 4200 Fax: +1 410 799 4207

**Production Facilities:**

7510 Montevideo Road,  
Jessup, MD 20794  
52 Springvale Road,  
Red Lion, PA 17356  
Tel: +1 717 244 4071 Fax: +1 717 246 3437

**Canadian Sales & Support Office:**

880 Equestrian Court, Oakville,  
ON L6L 6L7 Canada  
Tate Hotline: 1-800-231-7788  
Tel: +1 905 847 0138 Fax: +1 905 847 0141

**Australian Sales & Support Office:**

28 Biloela Street, Villawood NSW 2163  
Tel: +61 02 9728 4111 Fax: +61 02 9728 3088

**Asia Sales & Support Office:**

19 Cecil Street  
#05-15, 5th Floor, The Quadrant  
Singapore 049704  
Tel: +65 6653 5358

**Central and South American Sales & Support:**

Tel: +1 443 995 1808

**European Sales & Support:**

B16 Ballymount Corporate Park,  
Ballymount Avenue,  
Ballymount, Dublin 12, Ireland  
Tel: +353 (0) 87 1238383

**Middle East Sales & Support:**

Jebel Ali-Lahbab Road (E 77 Road)  
Dubai Investment Park  
United Arab Emirates  
Tel: +971 56 199 8368

[tateinc.com](http://tateinc.com)

A Kingspan Group Company



Tate components are proudly made in the U.S.A.